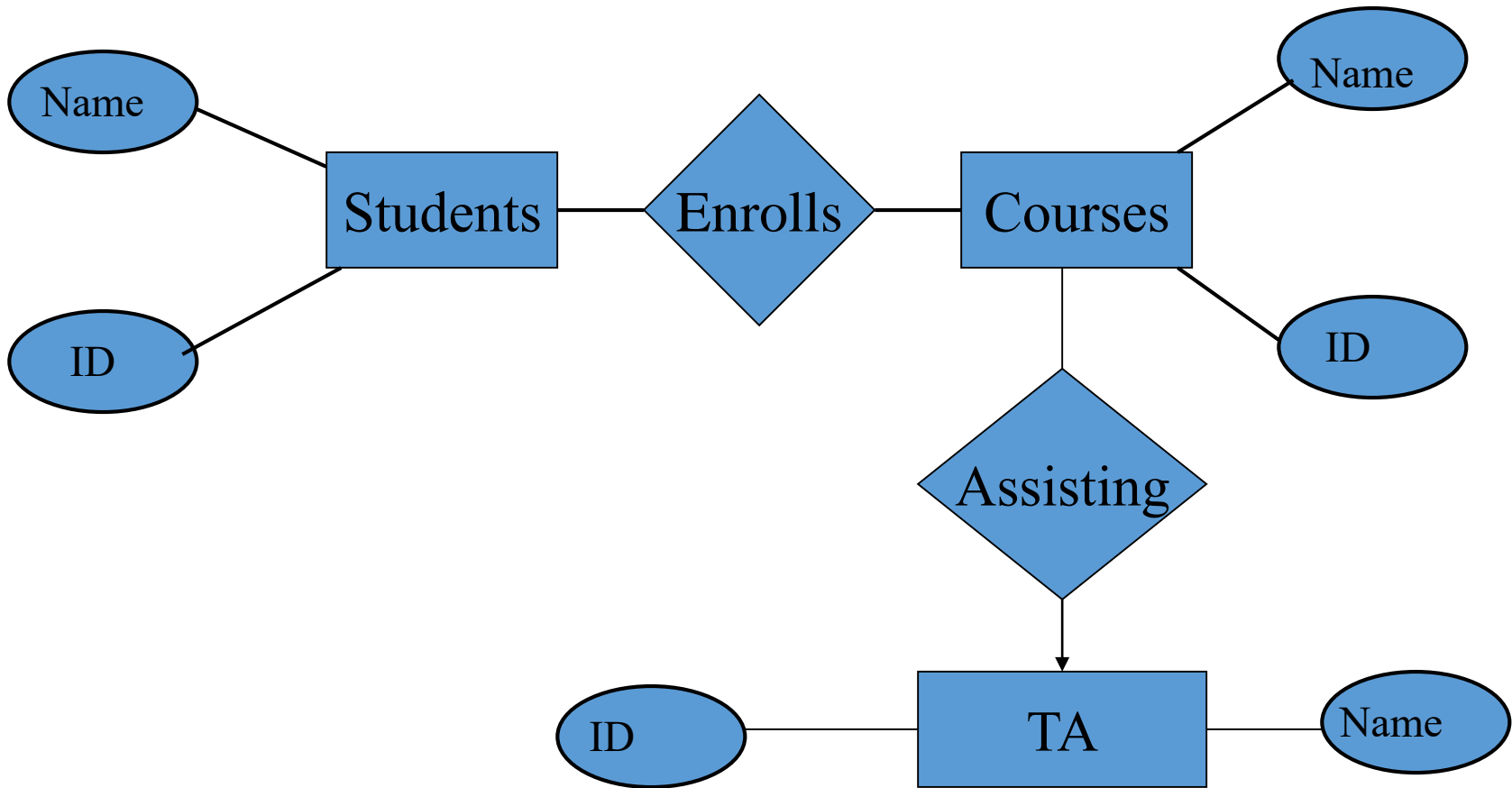


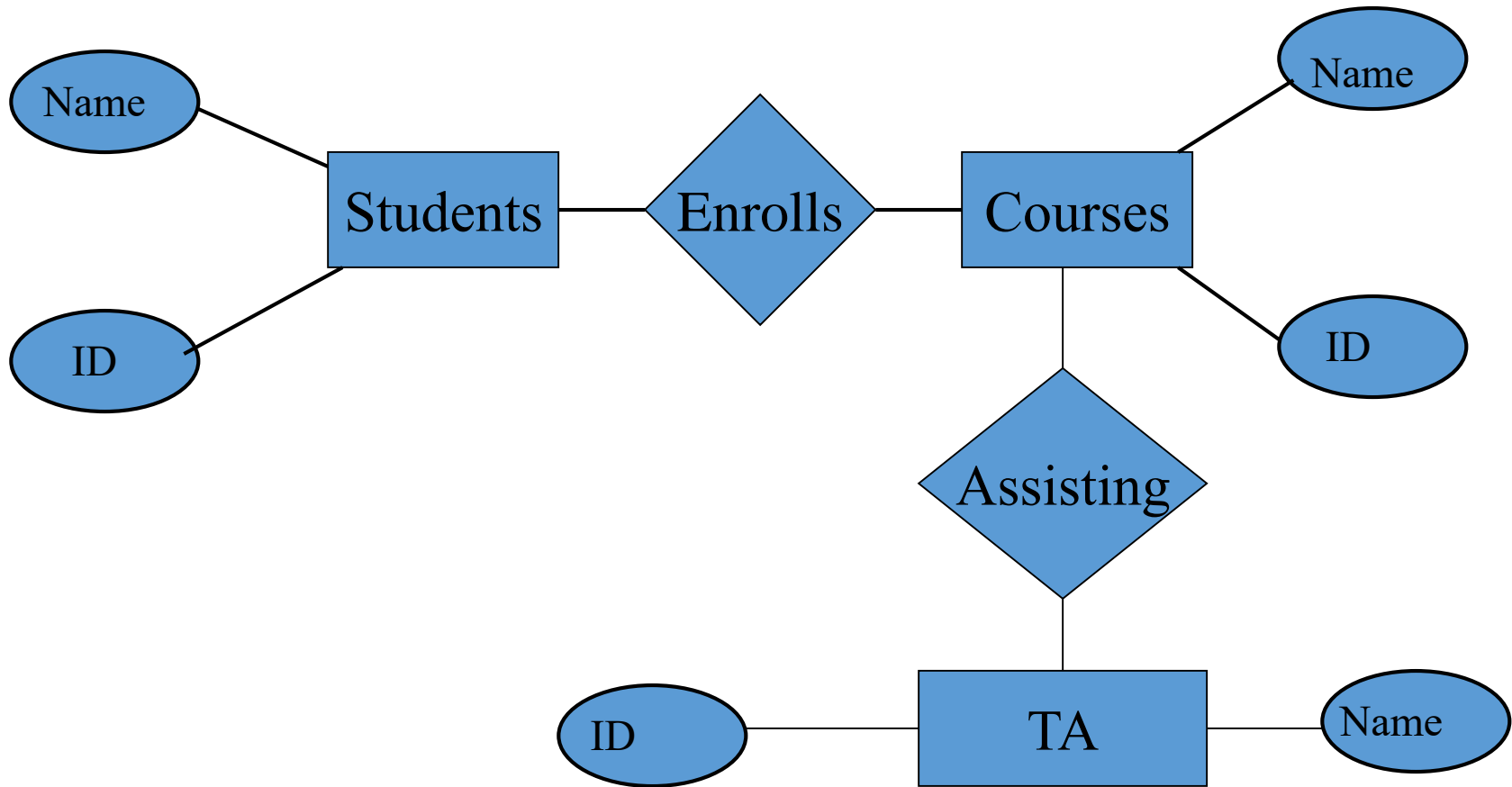
Multiplicity of multiway
relationships

Multiplicity of multiway relationships 1/4



1 TA per course

Multiplicity of multiway relationships 2/4

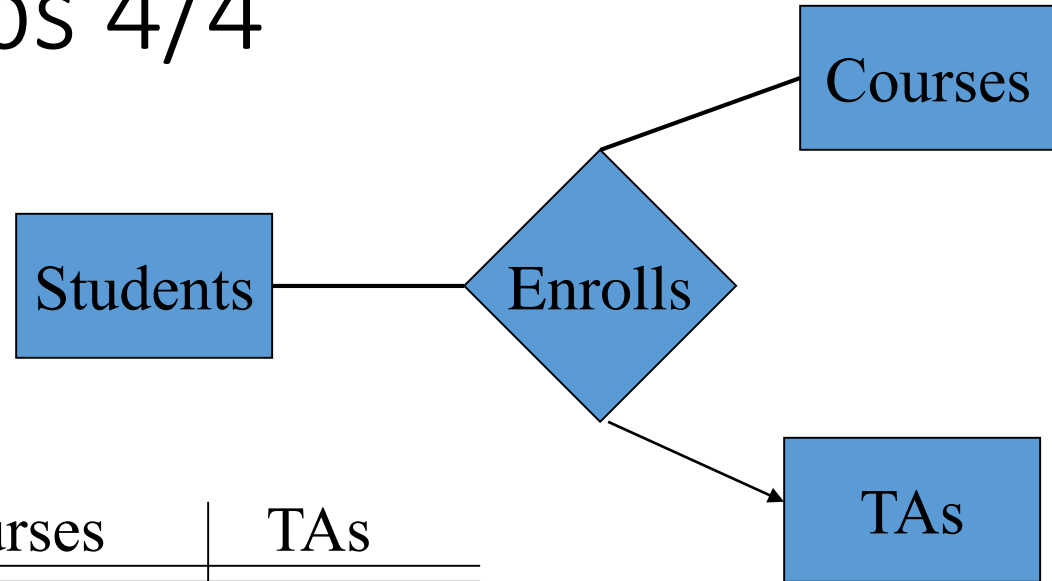


Multiple TAs per course

Multiplicity of multiway relationships 3/4

- Works if each TA is a TA of all students
 - Student and TA connected through Course
- But what if students were divided among multiple TAs?
 - Then a student in CSC343 would be related to all of the TA's for CSC343—which one has helped him?
- 3-way relationship is helpful here

Multiplicity of multiway relationships 4/4



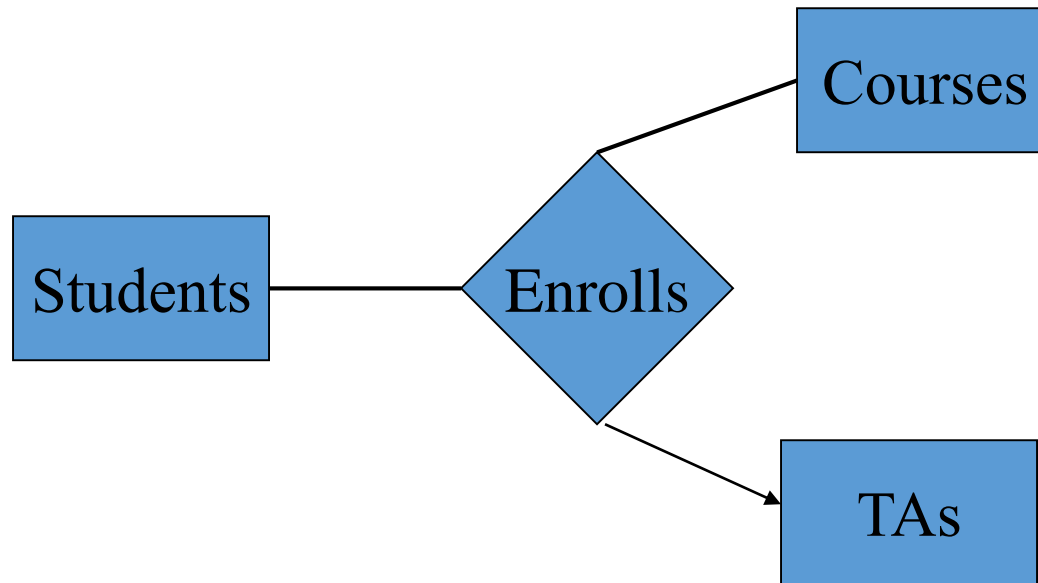
Enrolls entries:

Students	Courses	TAs
Condi	CSC343	Donald
George	CSC343	Dick
Alberto	CSC343	Colin
...

Enrolls determines
TA:

(student, course) →
at most one TA

Multiplicity test for multiway relationships 1/2



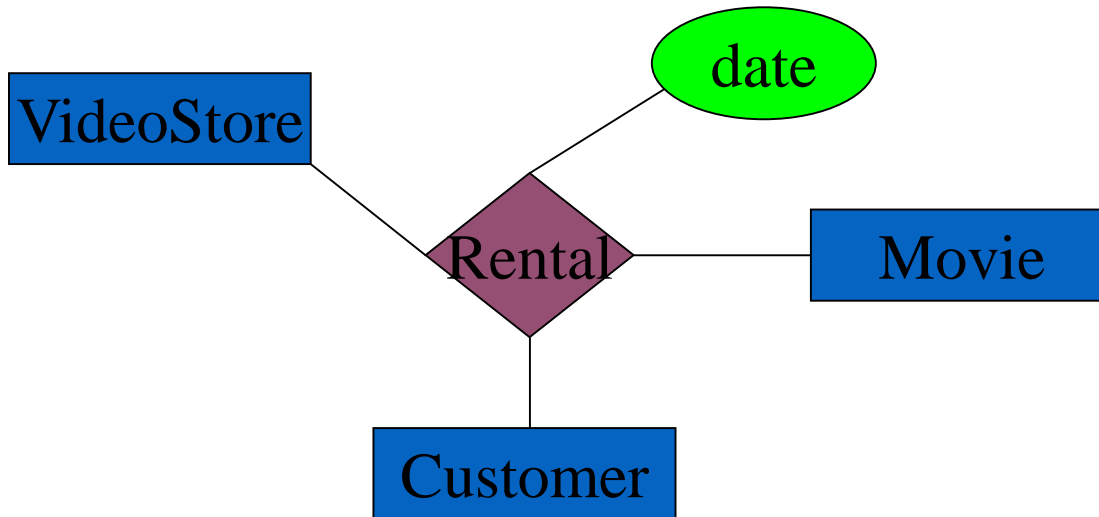
Take every **PAIR** of entities and see to how many entities it is related in the third:

(Student A, Course B) -> 1 TA

(Course B, TA C) -> multiple students

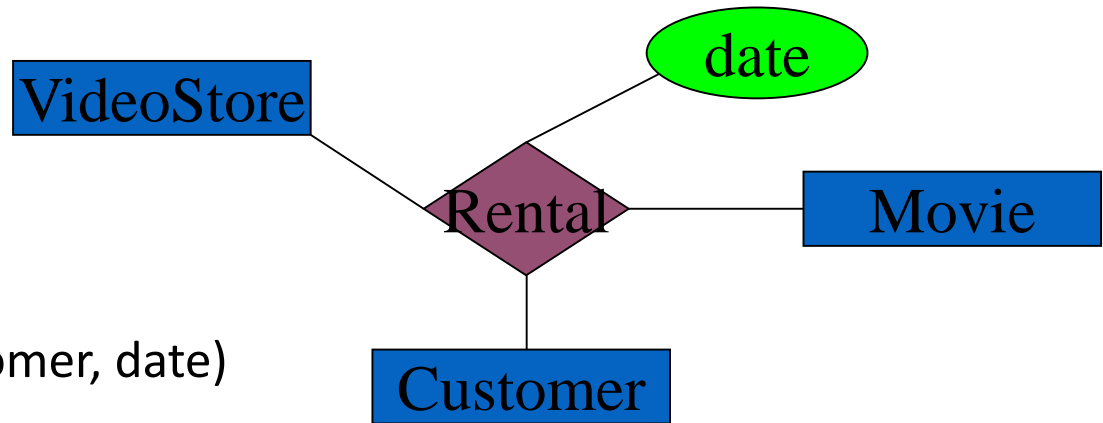
(Student A, TA C) -> possibly multiple courses over the years

Multiplicity test for multiway relationships 2/2



Where should we put arrows here?

Multiway relationships can be represented as binary – but mean the same thing



The schema is the same
Rental (store, movie, customer, date)

